



CASSIA

B.O.D INCUBATOR

Construction

- Double walled cabinet with inner chamber made of stainless steel and outer made of mild steel / CRCA and powder coated.
- Inner chamber doesn't have screws or weld joints or crevices. This effectively prevents any type of contamination.
- Removable and adjustable type shelf support with light fit shelves are provided which help avoid samples falling during door opening or handling. The shelves also accommodate samples of various sizes.
- Polycarbonate door is provided for viewing samples without disturbing the chamber temperature.

Temperature Range

5°C above ambient to 60°C

Control system

The instrument is controlled by means of precision microprocessor based PID controller with a control accuracy of $\pm 0.2^{\circ}\text{C}$

Safety protection system

- Operation protection: MCB (Master Circuit Breaker) is provided to protect the operator from any electrical shock, short circuit or any other fire hazards.
- Controller protection: MOV is provided to protect the controller damage from high voltage fluctuations.

Sizes available

Outer Dimension (mm)	Inner Dimension (mm)	Volume (Litres)	Power Rating (watt)
600 (W) x 760 (D) x 1070 (H)	500 (W) x 500 (D) x 400 (H)	100	800
600 (W) x 760 (D) x 1470 (H)	500 (W) x 500 (D) x 800 (H)	200	1500
600 (W) x 760 (D) x 1870 (H)	500 (W) x 500 (D) x 1200 (H)	300	2000



Cassia Siamia



BACTERIOLOGICAL INCUBATOR

Construction

- Double walled cabinet with inner chamber made of stainless steel and outer made of mild steel / CRCA and powder coated.
- Inner chamber doesn't have screws or weld joinings or crevices. This effectively prevents any type of contamination.
- Removable and adjustable type shelf support with tight fit shelves are provided which help avoid samples falling during door opening or handling. The shelves also accommodate samples of various sizes
- Inner glass door is provided for viewing samples without disturbing the chamber temperature.

Natural convection type incubator has unique proportional ventilation system, which avoids overshoot of temperature over manually adjusted ventilation system.

Temperature Range

5°C above ambient to 70°C.

Control system

The instrument is controlled by means of precision microprocessor based PID Controller with a control accuracy of ± 0.2 C. A safety imported jumo liquid expansion thermostat is provided to protect the samples in case of any malfunction of PID Controller.

Safety protection system

Operator protection : MCB (Master Circuit Breaker) is provided to protect the operator from any electrical shock, short circuit or any other fire hazards.

Controller protection : MOV is provided to protect the controller damage from high voltage fluctuations.

Product/Sample protection : Safety thermostat is provided in case of failure of microprocessor controller thereby protecting the samples from temperature overshoot.

Sizes available

Outer Dimension (mm)	Inner Dimension (mm)	Volume (Litres)	Power Rating (watt)
600 (W) x 600 (D) x 700 (H)	500 (W) x 500 (D) x 400 (H)	100	250
600 (W) x 600 (D) x 1000 (H)	500 (W) x 500 (D) x 800 (H)	200	500
600 (W) x 600 (D) x 1300 (H)	500 (W) x 500 (D) x 1000 (H)	300	750





CASSIA

DEEP FREEZER

Construction

- Double walled cabinet with inner chamber made of stainless steel and outer made of mild steel / CRCA and powder coated
- Inner chamber doesn't have screws or weld joints or crevices. This effectively prevents any type of contamination.
- Removable and adjustable type shelf support with tight fit shelves are provided which help avoid samples falling during door opening or handling. The shelves also accommodate samples of various sizes.

Temperature Range

-20°C 1/-5°C

Control system

The instrument is controlled by means of precision microprocessor based PID controller with a control accuracy of $\pm 1^\circ\text{C}$

Safety protection system

Operator protection: MCB (Master Circuit Breaker) is provided to protect the operator from any electrical shock, short circuit or any other fire hazards.

Controller protection: MOV is provided to protect the controller damage from high voltage fluctuations.

HOT AIR OVEN

Construction

- Double walled cabinet with inner chamber made of stainless steel and outer made of mild steel and is powder coated.
- Inner chamber doesn't have any screws or weld joints or any crevices. This effectively prevents any type of contamination.
- Removable and adjustable type shelf support with tight fit shelves are provided which help avoid samples falling during door opening or during handling. Also accommodation of various sizes of samples is possible.
- Natural convection type incubator has unique proportional ventilating system, which avoids overshoot of temperature over manually adjusted ventilation system.

Temperature Range

5°C above ambient to 250°C

Control system

The instrument is controlled by means of precision microprocessor based PID controller with a control accuracy of $+1^\circ\text{C}$. A safety imported jumo liquid expansion thermostat is provided to protect the samples in case of any malfunction.

Safety protection system

Operator protection: MCB (Master Circuit Breaker) is provided to protect the operator from any electrical shock, short circuit or any other fire hazards.

Controller protection: MOV is provided to protect the controller damage from any high voltage function.

Product / Sample protection : Safety thermostat is provided in case of microprocessor controller failure thereby protecting the samples from temperature overshoot.

Sizes available

Outer Dimension (mm)	Inner Dimension (mm)	Volume (Litres)	Power Rating (watt)
600 (W) x 600 (D) x 700 (H)	500 (W) x 500 (D) x 400 (H)	100	1.5 kw
600 (W) x 600 (D) x 1100 (H)	500 (W) x 500 (D) x 800 (H)	200	1.5 kw
600 (W) x 600 (D) x 1500 (H)	500 (W) x 500 (D) x 1200 (H)	300	2.0 kw



Cassia Siamia

HEAVY DUTY OVEN / DRIER

Construction

- Triple walled cabinet with inner and middle chamber made of stainless steel and outer made of mild steel and outer made of mild steel and powder coated.
- Inner chamber doesn't have screws or well joinings or crevices. This effectively prevents any type of contamination.
- Removable and adjustable type shelf support with tight fit shelves are provided which help avoid samples falling during door opening or handling. The shelves also accommodate samples of various sizes.
- Forced convection type oven has unique adjustable type butterfly valve, which effectively balances the exhaust to maintain homogeneous temperature throughout the chamber.

Temperature Range

5°C above ambient to 250°C / 400°C

Control system

The instrument is controlled by means of precision microprocessor based PID controller with a control accuracy of $\pm 1^\circ\text{C}$. A safety imported jumo liquid expansion thermostat is provided to protect the samples in case of any malfunction of PID controller.

Safety protection system

Operator protection : MCB (Master Circuit Breaker) is provided to protect the operator from any electrical shock, short circuit or any other fire hazards.

Controller protection : MOV is provided to protect the controller damage from high voltage fluctuations.

Product/Sample protection : Safety thermostat is provided in case of failure of microprocessor controller thereby protecting the samples from temperature overshoot.

Sizes available

Outer Dimension (mm)	Inner Dimension (mm)	Volume (Litres)	Power Rating (watt)
800 (W) x 700 (D) x 900 (H)	500 (W) x 500 (D) x 400 (H)	100	2.0 kW
800 (W) x 700 (D) x 1300 (H)	500 (W) x 500 (D) x 800 (H)	200	2.5 kW
800 (W) x 700 (D) x 1500 (H)	500 (W) x 500 (D) x 1000 (H)	250	3.0 kW





CASSIA

MUFFLE FURNACE

Temperature Range

5°C above ambient to 1200°C

Control system

The instrument is controlled by means of precision microprocessor based PID controller with a control accuracy of 1°C

Safety protection system

Operator Protection: MCB (Master Circuit Breaker) is provided to protect the operator from any electrical shock, short circuit or any other five hazards.

Controller Protection: MOV is provided to protect the controller damage from high voltage fluctuations.

Sizes available

Inner Dimension (cm)	Volume (MLitres)	Power Rating
35 (W) x 15 (D) x 15 (H)	7000	3.5 kW



SEED GERMINATOR

(Single & Dual Chambers)

Construction

- Double walled cabinet with inner chamber made of stainless steel and outer made of mild steel / CRCA and powder coated.
- Inner chamber doesn't have screws or weld joints or crevices. This effectively prevents any type of contamination.
- Removable and adjustable type shelf support with light fit shelves are provided which help avoid samples falling during door opening or handling. The shelves also accommodate samples of various sizes.

Temperature Range

5°C +/- 60°C

Humidity Range

90 - 95% Rh +/-3%

Control System

The instrument is controlled by means of precision microprocessor based PID controller with a control accuracy of ±1°C

Safety protection system

Operator protection: MCB (Master Circuit Breaker) is provided to protected the operator from any electrical shock, short circuit or any other fire hazards.

Controller protection: MOV is provided to protect the controller damage from high voltage fluctuations.



Cassia Siamia



CASSIA

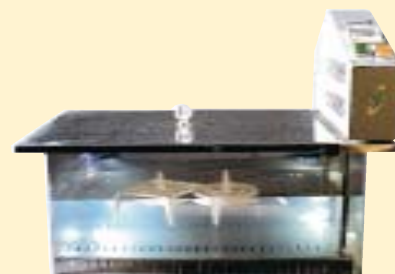
WATER BATHS

Unique, Versatile and Most Reliable

- This general purpose water bath is solution to daily routine laboratory applications where reliable, accurate and perfect thermo regulation is required.
- The unique design and the material of construction helps in easy maintenance. Being light weight helps in handling. The transparent nature of the polycarbonate material allows the user to view the samples without opening the lid.
- Various optional accessories are provided to suit diverse applications.
- Single piece see through PC bath
- Good thermal resistance and light weight
- Smooth inner surface enables easy cleaning
- Removable and separate control panel with heaters for easy maintenance

Specifications

Volume	:	30 litres
Capacity	:	4 Test Tube Racks
Tank Construction	:	Polycarbonate
Temperature Range	:	Ambient to 95° C
Temperature Control	:	Thermostat/Electronic Temp. Controller
Temperature Display	:	Thermometer/LED Display
Display Resolution	:	1° C / 0.1° C
Homogeneity	:	± 0.5° C
Power Consumption	:	2.5 kW
Dimensions (mm)		
- Top Opening	:	450 x 300
- Tank Depth	:	200
- Exterior (W x D x H)	:	530 x 345 x 272
- Packaging (W x D x H)	:	705 x 470 x 480
Weight (Kgs)		
- Net	:	7.5 Kgs
- Gross	:	15.0 Kgs



Cassia Siamia